



**ALASKA DIVISION OF HOMELAND SECURITY &
EMERGENCY MANAGEMENT**



SITUATION REPORT 22-347 • DECEMBER 13, 2022

Toll-Free 1.800.478.2337

Anchorage Area 907.428.7000

SEOC 907.428.7100

<p><u>SEOC Preparedness Level</u> Level 1 – Routine Operations</p>	<p>http://ready.alaska.gov</p>	<p><u>National Terrorism Advisory System:</u> Read the NTAS Bulletin here</p>
<p><u>Maritime Security (MARSEC)</u> Level:1-Minimum Appropriate Security Measures</p>	<p>WHO Novel Coronavirus Pandemic (COVID-19): 2019 Novel Coronavirus</p>	<p><u>Alaska Military Installation Force Protection Level:</u> FPCON Bravo</p>

(Significant changes from previous situation reports are in red.)

Significant Issues:

Southcentral Snow Storm:

Another snow storm beginning Sunday evening and into Monday morning has impacted Southcentral Alaska. Reports of more than 12 to 15 inches of snow across the region have closed some schools in the Western Kenai Peninsula, in addition, Anchorage and Matsu School districts have also closed school again today for the fourth consecutive day. For current driving conditions dial 511 or link to <https://511.alaska.gov/> **The SEOC will continue to monitor continued snow fall conditions and alert impacted areas as needed.**

Stebbins Store Fire:

The SEOC is reviewing a signed copy of a local emergency declaration, the SEOC will continue to work with state,local, tribal and volunteer agencies to assist the community with the response and recovery for the store fire.

State of Alaska Department of Health (DOH)

The DOH is leading the State of Alaska COVID-19 Recovery, supported by the SEOC and other state departments as required.

For current COVID-19 information, see:

<https://covid19.alaska.gov/>

<https://www.cdc.gov/coronavirus/2019-ncov/index.html>

NTAS Bulletin

The U.S. Department of Homeland Security has issued an updated National Terrorism Advisory Bulletin. The updated bulletin can be viewed at the below link

To read current or expired advisories, click the link below:

<https://www.dhs.gov/national-terrorism-advisory-system>

Travel Alerts and Conditions

For current driving conditions dial 511 or link to <https://511.alaska.gov/>

Barry Arm Landslide / Tsunami Risk

For the latest information on the Barry Arm Landslide and Tsunami risk, click here:
[DGGs Barry Arm Landslide and Tsunami Hazard](#)

Recent Earthquakes

USGS Earthquake Information: <http://earthquake.usgs.gov/>
National Tsunami Warning Center: <http://tsunami.gov/>

Alaska Volcanoes

Cleveland Alert Level: **Advisory** and Aviation Color Code: **Yellow**
Great Sitkin Alert Level: **Watch** and Aviation Color Code: **Orange**
Pavlof Alert Level: **Watch** and Aviation Color Code: **Orange**
Semisopchnoi Alert Level: **Advisory** and Aviation Color Code: **Yellow**
Takawangah Alert Level: **Advisory** and Aviation Color Code: **Yellow**
For Alaska Volcano updates, go to: <https://www.avo.alaska.edu/>

Air Quality Index (AQI) Advisories

For the most up to date Air Quality Index Advisories:

<http://dec.alaska.gov/Applications/Air/airtoolsweb/Home/Index>

Spills of Oil and Hazardous Substances

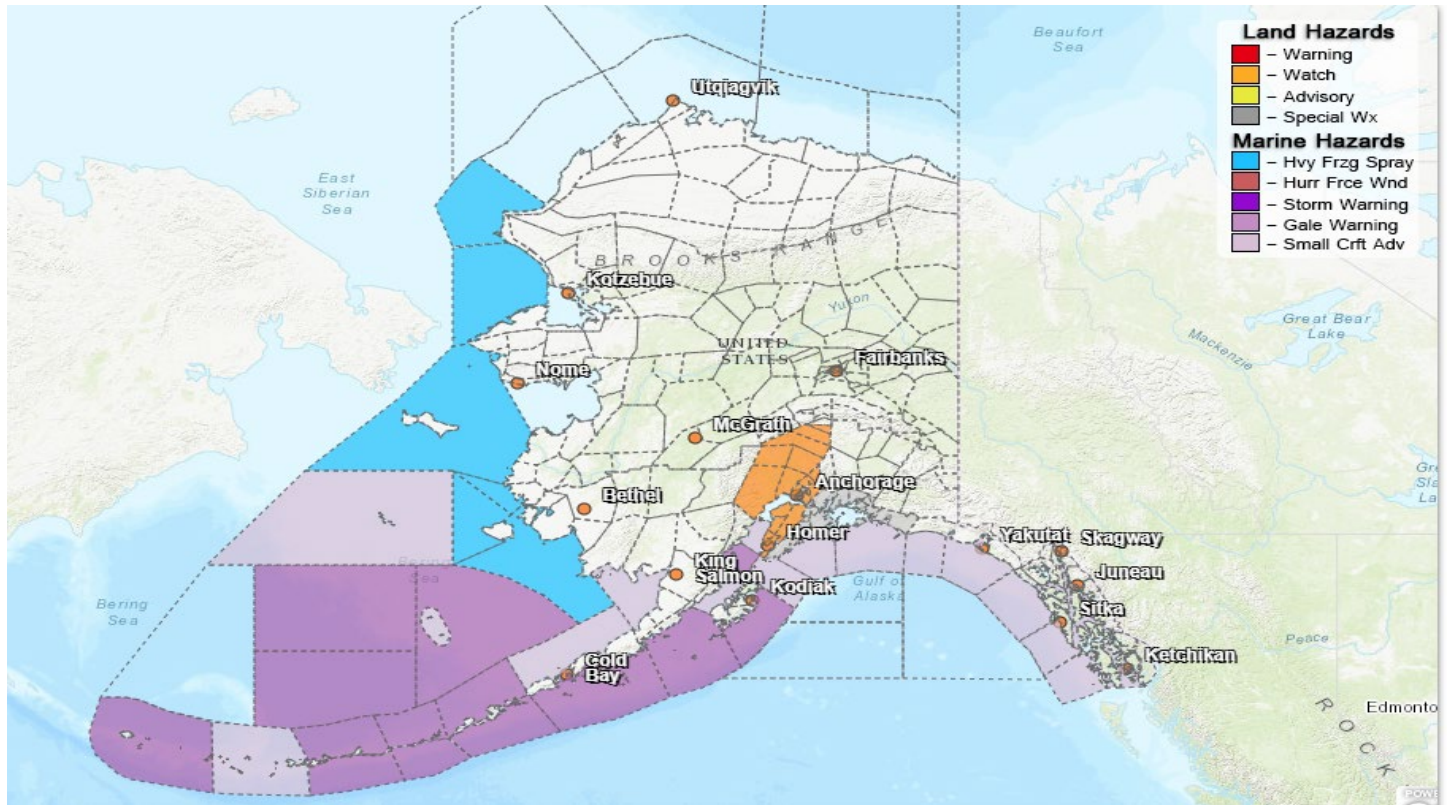
The ADEC Spill Prevention and Response page is located at:
<http://dec.alaska.gov/spar/ppr/spill-information/response/>

Alaska Cyber Security Information

State Employees may sign up for cyber security notifications and alerts at
<https://oit.alaska.gov/security>

CISA-Cybersecurity Services and Tools: www.cisa.gov/free-cybersecurity-services-and-tools

Significant Weather:

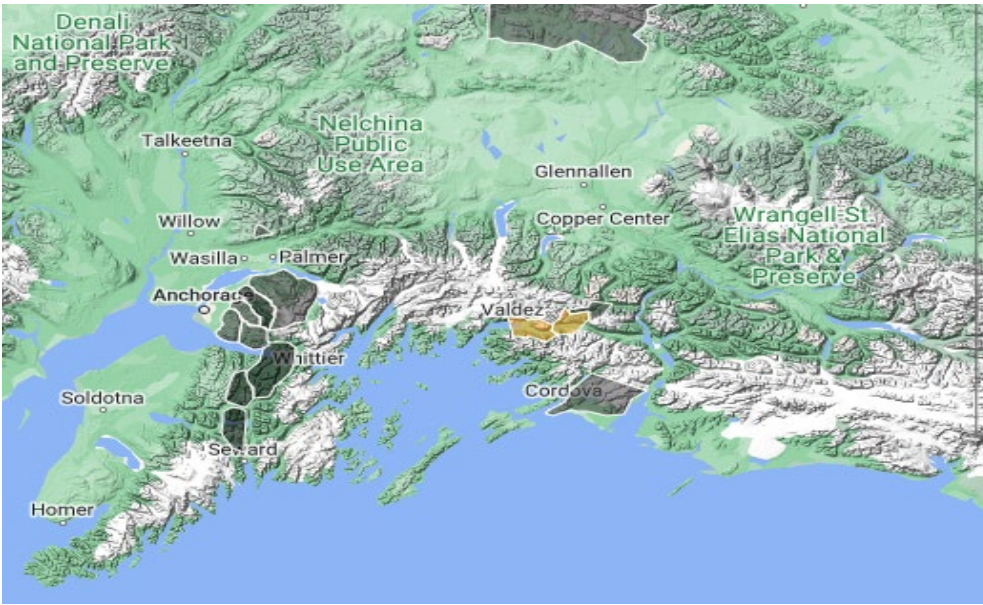


Winter storm watches are in effect for the following areas:

- Anchorage from Wednesday morning through Thursday Morning for snow accumulation of 7-12 inches
- Kenai Peninsula from Wednesday morning through Thursday morning for heavy snow with accumulation of 8-14 inches.
- Matanuska Valley from Wednesday morning through Thursday Morning for snow accumulation of 7-13 inches with heaviest snowfall from Wasilla west and southwest.
- Susitna Valley from Wednesday morning through Thursday Morning for snow accumulation of 8-14 inches with heaviest snowfall from Talkeetna South.

For more information and the most current weather, Watches / Warnings / Advisories go to:
<http://www.weather.gov/arh>.

Avalanche Forecast:



Areas near Valdez have considerable advisory levels below 2,000ft and High advisory levels from 2,000ft to above 4,000 ft.

Areas near Cordova have a low advisory level below 2,000 ft and a moderate advisory level above 2,000 ft.

Check the Avalanche Forecast Center closest to your area for the most up to date information on avalanche potential. <https://alaskasnow.org> or <https://www.weather.gov/afc/avalancheweather>

The Next Situation Report: will be 14 December 2022. A significant change in the situation or the threat level will prompt an interim report. This report is posted on the internet at <https://ready.alaska.gov/sitrep>.

To register for email distribution, go to <http://list.state.ak.us/mailman/listinfo/dhsem.situation.report>. Direct questions regarding this report to the SEOC at 907-428-7100 or seoc@alaska.gov